



# **M & E Angus**

*28th Annual Production Sale*

## **THURSDAY, APRIL 11, 2024**

1:00 p.m. ♦ at the ranch ♦ one mile west of Kimball, SD



**[www.MandEangus.com](http://www.MandEangus.com)**

# M & E Angus

28th Annual Production Sale

## THURSDAY, APRIL 11, 2024

1:00 p.m. ♦ at the ranch ♦ one mile west of Kimball, SD

### Auctioneer:

Chisum Petersen..... 605-730-4214

### Ringmen:

Lee Ness..... 605-680-2778

- Kimball Livestock Exchange

Justin Dikoff..... 605-290-0635

- DVAuction

Jim Scheel ..... 605-545-1521

**Schedule:** 10:00 a.m. - Cattle on display

- Noon - Complimentary meal

- 1:00 p.m. - Sale begins

**Video Auction:** All bulls will be on video and will be available to see on our website – [www.MandEangus.com](http://www.MandEangus.com). Live internet bidding will be available through DV Auction.

**Announcements:** Announcements made sale day take precedence over printed material in the sale catalog. Anyone attending the sale attends at their own risk.

**Semen Check:** Will be done before the sale. The bulls will also be poured and given a PregGuard, anthrax, and foot rot shot.

**Liability:** All persons attending the sale do so at their own risk. Kroupa Ranch assumes no liability for accidents or property loss that may occur.

### Bulls have been 50K tested

**Herd Health:** All bulls have been on a complete vaccination program. They received Bovi-Shield GOLD 5, one shot of Pasteurella, and ULTRABAC 7. They had boosters in August and November. Bulls have tested negative to BVD. All work was done by Central Dakota Animal Clinic (Platte, SD).

**Semen Interest:** We reserve the right to collect semen for use in our herd, on all bulls sold. This will be done at our expense and the buyers convenience.

**Trucking:** We will deliver within 200 miles of Kimball by early-May. All bulls left at the ranch will be done at the buyer's risk.

**Volume Discount:** 3 bulls - 3%, 4 bulls – 4%, 5 bulls – 5%  
**Inclement weather or postponement:** Listen to KMIT 105.9 radio

**The Bulls will be penned for viewing but will not go through the sale ring on sale day.**

**RAW**  
RAY PRINTING & DESIGN

Catalog produced by Rav Printing & Design  
Beau & Mary Ravellette • (605) 685-8155  
Philip, South Dakota



# Welcome to our 28th Annual Production Sale.

The Kroupa and Clarke families would like to invite you to our 28th Annual Production sale to be held on Thursday, April 11, 2024. When looking through these bulls you will find sound, functional bulls that are ready to breed and will work in the real world. These bulls have not had special treatment and have been run the same as commercial cattlemen and women operate.

I was told once by a wise man, "I don't chase the fads. Keep it in the middle of the road as the fads will hit you coming and going." Here at Kroupa Ranch we do not chase the fads. We breed and select for cattle that are functional, structurally sound, good mothers that breed on time, and calves that have vigor to get up and hit the ground running.

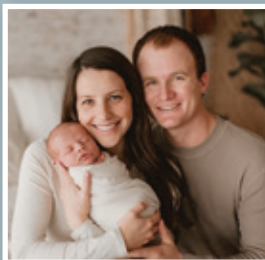
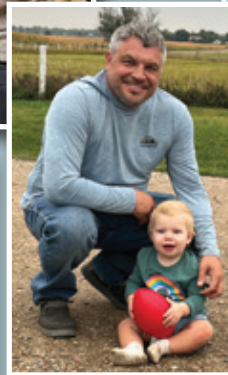
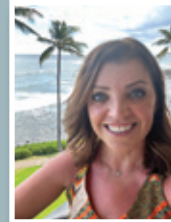
All bulls have been ultra-sounded by Kama Bruns. Dr. Bryant Soulek, with Central Dakota Animal Clinic, conducted a breeding soundness exam on all bulls which consists of semen & scrotal checking, BVD test, and breeding vaccinations.

Please give us an opportunity to show you the bulls, visitors are always welcome. I think you will find something you like.

We are also selling 40 first calf heifer pairs with M&E Angus sired calves at side. All heifers are home raised and calved here.

Thank you for your business in the past and we look forward to hearing and/or seeing you soon.

*Sincerely, Marvin*



[www.MandEangus.com](http://www.MandEangus.com)

**Marvin & Eileen Kroupa  
Michael & Nikki Kroupa  
Ann & Jase Clarke**

36023 251st Street  
Kimball, SD 57355  
[www.MandEangus.com](http://www.MandEangus.com)  
[kroupa@midstatesd.net](mailto:kroupa@midstatesd.net)

605-778-6346 (Ranch)  
605-730-0167 (Marvin)  
605-680-1083 (Michael)  
605-354-6312 (Jase)

Sale will be broadcasted on:  
See page 10 for details

**DVAuction**  
Broadcasting Real-Time Auctions

Cover photo taken by:  
Ann Clarke



# HEIFER PAIRS

We are offering 40 heifer pairs with M & E Angus sired calves by side. They were born in a 2 week period starting around March 5, and are sired by M & E Angus bulls. Heifers have been on a complete vaccination and mineral program and the calves were all given Inforce 3 at birth.

For logistic reasons we will only have a sample of the pairs on site sale day.

Please call Michael to view heifer pairs prior to the sale. Videos will also be taken of the pairs. Winning bidder must take 10 heifer pairs with option to take up to all 40.

## SIRE SITZ RESILIENT 10208



BD: 02/15/2018

Reg No: \*19057457

MOHNEN SUBSTANTIAL 272	BENFIELD SUBSTANCE 8506
SITZ STELLAR 726D	MOHNEN GLYN MAWR ELBA 1758
SITZ PRIDE 200B	CONNEALY FINAL PRODUCT
	SITZ PRIDE 308Y
SITZ TOP GAME 561X	GDAR GAME DAY 449
SITZ MISS BURGESS 1856	SITZ PRIDE 88T
SITZ MISS BURGESS 4381	SITZ RAINMAKER 10899
	SITZ MISS BURGESS 1609

CED	BW	WW	YW	SC	Milk	Marb	RE	\$M	\$W	\$B	\$C
+7	+0.6	+75	+134	+1.16	+22	+0.99	+0.57	+80	+77	+149	+273



## M&E RESILIENT 503

BD: 2/16/23

Reg No: 20869805

SITZ RESILIENT 10208	SITZ STELLAR 726D
	SITZ MISS BURGESS 1856
M&E PRIDE 111	KOUPALS B&B PATHFINDER 8106
	M&E PRIDE 169

BW	89
Adj. WW	785
Adj. YW	1347
SC	37
RE	13.7
Marb	2.57

CED	BW	WW	YW	SC	Milk	Marb	RE	\$M	\$W	\$B	\$C
+6	+1.5	+83	+139	+0.55	+21	+0.50	+0.63	+70	+74	+117	+222

Suitable for heifers. Out of big framed good doing cow family.

**2****M&E RESILIENT 573**

BD: 2/21/23

Reg No: 20869807

SITZ RESILIENT 10208

SITZ STELLAR 726D

BW	74
Adj. WW	692
Adj. YW	1247
SC	37
RE	13.5
Marb	2.24

SITZ MISS BURGESS 1856

KROUPALS B&amp;B PATHFINDER 8106

M&amp;E BLACKCAP 341

M&amp;E BLACKCAP 419

CED	BW	WW	YW	SC	Milk	Marb	RE	\$M	\$W	\$B	\$C
+8	+1.3	+84	+138	+1.21	+28	+0.70	+0.81	+89	+82	+153	+287

Suitable for heifers. Has an excellent set of #s and also looks the part.

**3****M&E RESILIENT 603**

BD: 2/23/23

Reg No: 20869818

SITZ RESILIENT 10208

SITZ STELLAR 726D

BW	77
Adj. WW	749
Adj. YW	1074
SC	34
RE	13.5
Marb	2.95

SITZ MISS BURGESS 1856

M&amp;E RESOURCE 549

M&amp;E BLACKCAP 1031

M&amp;E BLACKCAP 1025

CED	BW	WW	YW	SC	Milk	Marb	RE	\$M	\$W	\$B	\$C
-1	+3.7	+86	+137	+0.91	+27	+0.77	+0.78	+86	+80	+159	+292

Same cow family as Lot 2. Good carcass data, excellent cow family.

**4****M&E RESILIENT 663**

BD: 2/24/23

Reg No: 20869815

SITZ RESILIENT 10208

SITZ STELLAR 726D

BW	74
Adj. WW	721
Adj. YW	1039
SC	37
RE	10.5
Marb	2.30

SITZ MISS BURGESS 1856

M&amp;E JUSTIFIED 189

M&amp;E PRIDE 541

M&amp;E PRIDE 1959

CED	BW	WW	YW	SC	Milk	Marb	RE	\$M	\$W	\$B	\$C
+0	+2.5	+83	+128	+1.33	+26	+0.65	+0.39	+76	+80	+130	+245

Same cow family as Lot 1, frame, length, and longevity.

**5****M&E RESILIENT 733**

BD: 2/27/23

Reg No: 20869790

SITZ RESILIENT 10208

SITZ STELLAR 726D

BW	64
Adj. WW	701
Adj. YW	1159
SC	37
RE	12.6
Marb	2.72

SITZ MISS BURGESS 1856

KROUPALS B&amp;B INFINITY 9012

M&amp;E EVERBEAM 1041

M&amp;E EVERBEAM 1516

CED	BW	WW	YW	SC	Milk	Marb	RE	\$M	\$W	\$B	\$C
+6	+0.1	+73	+126	+0.49	+25	+0.56	+0.62	+75	+69	+137	+253

Suitable for heifers.

**6****M&E RESILIENT 743**

BD: 2/28/23

Reg No: 20873936

SITZ RESILIENT 10208

SITZ STELLAR 726D

BW	74
Adj. WW	657
Adj. YW	1287
SC	35
RE	12.1
Marb	3.18

SITZ MISS BURGESS 1856

CONNEALY SPUR

M&amp;E QUEEN MOTHER 881

M&amp;E QUEEN MOTHER 1106

CED	BW	WW	YW	SC	Milk	Marb	RE	\$M	\$W	\$B	\$C
+9	+1.0	+78	+139	+0.15	+26	+0.64	+0.59	+82	+74	+142	+266

Suitable for heifers. Good marbling. Has been a pet to work with.





## M&E RESILIENT 803

BD: 3/1/23

Reg No: 20899300

SITZ RESILIENT 10208  
 SITZ STELLAR 726D  
 SITZ MISS BURGESS 1856  
 CONNEALY SPUR  
 M&E MARCIA 1131  
 M&E MARCIA 343

BW	77
Adj. WW	688
Adj. YW	1112
SC	33
RE	12.5
Marb	2.79

CED	BW	WW	YW	SC	Milk	Marb	RE	\$M	\$W	\$B	\$C
+3	+2.1	+68	+110	+0.52	+32	+0.80	+0.62	+111	+76	+129	+278

Good carcass data, also ranks in the Top 1% in Heifer Pregnancy.



## M&E RESILIENT 843

BD: 3/3/23

Reg No: 20869814

SITZ RESILIENT 10208  
 SITZ STELLAR 726D  
 SITZ MISS BURGESS 1856  
 M&E JUSTIFIED 189  
 M&E ERICA LASS 511  
 M&E ERICA LASS 1319

BW	75
Adj. WW	659
Adj. YW	1096
SC	35
RE	12.2
Marb	3.31

CED	BW	WW	YW	SC	Milk	Marb	RE	\$M	\$W	\$B	\$C
+5	+1.1	+72	+127	+0.53	+21	+1.04	+0.89	+92	+69	+153	+290

Suitable for heifers. +1.04 Marbling Epd, +.89 Ribeye.



M & E Angus is a branch of the Kroupa ranch that was established in 1882. Currently the 4th, 5th, and 6th generations are active at the ranch. Our ranch started with a commercial base Hereford cow herd and transitioned to raising both commercial and registered Angus cow herds over the years

# DVAuction

[www.dvauction.com](http://www.dvauction.com)

Watch & Bid online for FREE!

Can't make the sale?

Let DVAuction bring the sale to you!

Busy during the sale?

Let DVAuction represent your bid!

For General Questions Please Contact Our Office:

(402) 316-5460 or [support@dvauction.com](mailto:support@dvauction.com)

Visit [www.dvauction.com](http://www.dvauction.com) and Register!

It's as easy as 1, 2, 3...

1. Create an account at [www.dvauction.com](http://www.dvauction.com) under the "create new account" tab
2. Apply for bidding by clicking "apply for bidding" in the upper left corner of your screen, at least 24 hours prior to the auction
3. Tune into the sale and make your purchases!

\*High Speed Internet Access Required

# SIRE LAR MAN IN BLACK



BD: 01/27/2020

Reg No: \*19955191

CONNEALY BLACK GRANITE  
BAR R JET BLACK 5063  
BAR R IRIS ANITA 0113

SITZ TOP GAME 561X  
JMB MAXINE TG 2131  
JMB MAXINE DELUXE 9034

CONNEALY CONSENSUS 7229  
EURA ELGA OF CONANGA 9109  
SITZ UPWARD 307R  
BAR R ANITA 7081  
GDAR GAME DAY 449  
SITZ PRIDE 88T  
STEVENSON CE DELUXE 1914  
JMB MAXINE 720

CED	BW	WW	YW	SC	Milk	Marb	RE	\$M	\$W	\$B	\$C
+9	+2.7	+94	+165	+1.46	+20	+1.15	+0.81	+62	+71	+213	+338



## M&E MAN IN BLACK 1133

BD: 3/21/23

Reg No: 20869934

LAR MAN IN BLACK

BAR R JET BLACK 5063

JMB MAXINE TG 2131

S A V RECHARGE 3436

M&E BURGESS 1416

M&E BURGESS 1293

BW	87
Adj. WW	766
Adj. YW	1308
SC	41
RE	12.5
Marb	2.83

CED	BW	WW	YW	SC	Milk	Marb	RE	\$M	\$W	\$B	\$C
+6	+3.1	+91	+155	+2.00	+25	+0.60	+0.69	+69	+76	+170	+289

Has looked good since he was a calf. Ranks in top 5% of breed in WW, YW, SC, also has a good Heifer Pregnancy score, and on top of all that is out of the Burgess cow family and traces back to 137.



## M&E MAN IN BLACK 1143

BD: 3/21/23

Reg No: 20869910

LAR MAN IN BLACK

BAR R JET BLACK 5063

JMB MAXINE TG 2131

M&E FREEDOM 2053

M&E ERICA 2159

M&E ERICA 1596

BW	90
Adj. WW	682
Adj. YW	1173
SC	35
RE	12.1
Marb	2.57

CED	BW	WW	YW	SC	Milk	Marb	RE	\$M	\$W	\$B	\$C
-1	+5.1	+80	+142	+0.90	+28	+0.57	+0.55	+67	+62	+166	+282

50K data ranks him in top 10% in WW, YW, YH, Doc, HP, & Carcass Weight.



## M&E MAN IN BLACK 1343

BD: 3/26/23

Reg No: 20869923

LAR MAN IN BLACK

BAR R JET BLACK 5063

JMB MAXINE TG 2131

KOUPALS B & B FIX IT 6072

M&E EVERBEAM 1458

M&E EVERBEAM 152

BW	88
Adj. WW	665
Adj. YW	1204
SC	38
RE	13.2
Marb	2.71

CED	BW	WW	YW	SC	Milk	Marb	RE	\$M	\$W	\$B	\$C
+5	+2.3	+85	+151	+1.13	+33	+0.83	+0.81	+79	+84	+169	+298

Phenotically the most complete bull in the sale, good growth and carcass EPDs to boot.



40 heifer pairs with M & E Angus sired calves by side will be selling first

# SIRE KROUPALS B&B INFINITY 9012



BD: 01/05/2019

Reg No: 19549083

KROUPALS B&B ON COURSE 5068  
 KROUPALS B&B DETAIL 7070  
 B&B LASSIE 3049  
 S TITTEST 1145  
 B&B ZARA 6078  
 B&B ZARA 4038

S A V RESOURCE 1441  
 B&B PURE PRIDE 2029  
 KROUPAL AMIGO 0272F  
 B&B LASSIE 0082  
 RA LINCOLN W144  
 S CORA 572  
 KROUPALS B&B EXTRA 0011  
 B&B ZARA 1080

CED	BW	WW	YW	SC	Milk	Marb	RE	\$M	\$W	\$B	\$C
-4	+4.5	+83	+136	+1.30	+26	+0.12	+0.78	+53	+68	+131	+223



## 13 M&E INFINITY 163

BD: 3/11/23

Reg No: 20884849

KROUPALS B&B DETAIL 7070  
 KROUPALS B&B INFINITY 9012  
 B&B ZARA 6078  
 VISION UNANIMOUS 1418  
 M&E EVERBEAM 1447  
 M&E EVERBEAM 2227

BW	87
Adj. WW	753
Adj. YW	1239
SC	38
RE	13.3
Marb	1.91

CED	BW	WW	YW	SC	Milk	Marb	RE	\$M	\$W	\$B	\$C
-4	+4.2	+83	+133	+0.74	+16	+0.34	+0.80	+36	+61	+138	+215

Good growth and goes back to the 2227 cow.

## 14 M&E INFINITY 183

BD: 3/14/23

Reg No: 20884842

KROUPALS B&B DETAIL 7070  
 KROUPALS B&B INFINITY 9012  
 B&B ZARA 6078  
 TC FREEDOM 104  
 M&E EVERBEAM 983  
 M&E EVERBEAM 653

BW	96
Adj. WW	773
Adj. YW	1282
SC	36
RE	12.6
Marb	2.41

CED	BW	WW	YW	SC	Milk	Marb	RE	\$M	\$W	\$B	\$C
+2	+3.6	+74	+127	+1.01	+25	+0.04	+0.81	+43	+60	+113	+190

Same cow family as Lot 13. Powerful cow family.



- Large screen TVs will be used instead of running the bulls through the ring.
- Bulls will be penned for your appraisal.
- Sale order will be available soon



**15****M&E INFINITY 193**

BD: 3/14/23

Reg No: 20884856

KOUPALS B&B DETAIL 7070  
 KOUPALS B&B INFINITY 9012  
 B&B ZARA 6078  
 MOHNEN SOUTH DAKOTA 402  
 M&E MAY 2716  
 M&E MAY 1522

BW	84
Adj. WW	638
Adj. YW	1128
SC	38
RE	12.8
Marb	2.54

CED	BW	WW	YW	SC	Milk	Marb	RE	\$M	\$W	\$B	\$C
-1	+3.1	+59	+100	+1.67	+30	+0.40	+0.46	+51	+58	+111	+195

Dam's NR 6@102

**16****M&E INFINITY 203**

BD: 3/14/23

Reg No: 20884864

KOUPALS B&B DETAIL 7070  
 KOUPALS B&B INFINITY 9012  
 B&B ZARA 6078  
 JMB TRACTION 292  
 M&E BLACK BESS 1707  
 MK BLACK BESS 374

BW	89
Adj. WW	760
Adj. YW	1286
SC	35
RE	13.8
Marb	2.63

CED	BW	WW	YW	SC	Milk	Marb	RE	\$M	\$W	\$B	\$C
+1	+3.7	+84	+142	+0.19	+33	+0.50	+0.71	+51	+76	+130	+220

The most massive bull in the offering. Dam's NR 5@108

**17****M&E INFINITY 213**

BD: 3/14/23

Reg No: 20884869

KOUPALS B&B DETAIL 7070  
 KOUPALS B&B INFINITY 9012  
 B&B ZARA 6078  
 DIAMOND IN THE ROUGH  
 DIAMOND CLOVA PRIDE HT34  
 RICH CLOVA PRIDE 0572

BW	73
Adj. WW	758
Adj. YW	1252
SC	38
RE	12.8
Marb	2.45

CED	BW	WW	YW	SC	Milk	Marb	RE	\$M	\$W	\$B	\$C
+4	+1.1	+80	+138	+1.88	+23	+0.07	+0.61	+55	+73	+125	+217

Good growth. Dam's NR 2@119

**18****M&E INFINITY 223**

BD: 3/16/23

Reg No: 20884881

KOUPALS B&B DETAIL 7070  
 KOUPALS B&B INFINITY 9012  
 B&B ZARA 6078  
 GDAR LEUPOLD 298  
 M&E KINCHTRY BEAUTY 537  
 M&E KINCHTRY BEAUTY 215

BW	80
Adj. WW	722
Adj. YW	1159
SC	38
RE	11.3
Marb	2.41

CED	BW	WW	YW	SC	Milk	Marb	RE	\$M	\$W	\$B	\$C
+6	+1.5	+74	+125	+1.02	+31	+0.15	+0.52	+56	+72	+129	+223

Dam's NR 4@106

**19****M&E INFINITY 233**

BD: 3/16/23

Reg No: 20884894

KOUPALS B&B DETAIL 7070  
 KOUPALS B&B INFINITY 9012  
 B&B ZARA 6078  
 GDAR LEUPOLD 298  
 M&E BLACKCAP 287  
 M&E BLACKCAP 1025

BW	90
Adj. WW	703
Adj. YW	1244
SC	36
RE	12.4
Marb	3.00

CED	BW	WW	YW	SC	Milk	Marb	RE	\$M	\$W	\$B	\$C
+5	+2.9	+74	+126	+0.61	+31	+0.36	+0.60	+58	+70	+132	+229

Dam's NR 4@ 101

**20****M&E INFINITY 243**

BD: 3/19/23

Reg No: 20884895

KOUPALS B&B DETAIL 7070  
 KOUPALS B&B INFINITY 9012  
 B&B ZARA 6078  
 JMB TRACTION 292  
 M&E QUINCY LASS 517  
 M&E QUINCY LASS 1143

BW	100
Adj. WW	759
Adj. YW	1269
SC	36
RE	13.3
Marb	2.37

CED	BW	WW	YW	SC	Milk	Marb	RE	\$M	\$W	\$B	\$C
+3	+3.2	+77	+129	+0.47	+25	+0.19	+0.58	+54	+65	+110	+197

Dam's NR 5@102

**21****M&E INFINITY 263**

BD: 3/22/23

Reg No: 20884870

KOUPALS B&B DETAIL 7070  
 KOUPALS B&B INFINITY 9012  
 B&B ZARA 6078  
 HAYNES OUTRIGHT 452  
 M&E EVERBEAM 447  
 M&E EVERBEAM 615

BW	85
Adj. WW	733
Adj. YW	1272
SC	39
RE	13.0
Marb	3.20

CED	BW	WW	YW	SC	Milk	Marb	RE	\$M	\$W	\$B	\$C
+5	+0.9	+67	+118	+1.07	+23	+0.50	+0.57	+75	+64	+134	+249

Big growthy cows behind this bull, above average carcass scores.



**22****M&E INFINITY 283**

BD: 3/23/23

Reg No: 20884902

KOUPALS B&B INFINITY 9012  
 B&B ZARA 6078  
 DIAMOND IN THE ROUGH  
 DIAMOND BLACKCAP 63F9  
 DIAMOND BLACKCAP 3S57

BW	-
Adj. WW	714
Adj. YW	1162
SC	38
RE	13.9
Marb	2.67

CED	BW	WW	YW	SC	Milk	Marb	RE	\$M	\$W	\$B	\$C
-1	+2.5	+68	+113	+1.14	+31	+0.32	+0.44	+67	+69	+112	+212

Dam's NR 3@108

**23****M&E INFINITY 293**

BD: 3/24/23

Reg No: 20895908

KOUPALS B&B INFINITY 9012  
 B&B ZARA 6078  
 VISION UNANIMOUS 1418  
 M&E EVERBEAM 1997  
 M&E EVERBEAM 1068

BW	85
Adj. WW	700
Adj. YW	1258
SC	38
RE	12.9
Marb	2.18

CED	BW	WW	YW	SC	Milk	Marb	RE	\$M	\$W	\$B	\$C
-2	+3.9	+73	+121	-	+23	-	-	+56	+55	-	-

Solid growth, good cow family.

**24****M&E INFINITY 323**

BD: 4/5/23

Reg No: 20884908

KOUPALS B&B INFINITY 9012  
 B&B ZARA 6078  
 DIAMOND SONIC F758  
 DIAMOND BELL 530H  
 DIAMOND BELL 1C88

BW	85
Adj. WW	748
Adj. YW	1202
SC	37
RE	13.8
Marb	2.15

CED	BW	WW	YW	SC	Milk	Marb	RE	\$M	\$W	\$B	\$C
+1	+2.0	+77	+132	+1.18	+28	+0.20	+0.78	+70	+73	+139	+250

Big Ribeye. Dam's NR 2@112

**25****M&E INFINITY 4023**

BD: 3/6/23

Reg No: 20885029

KOUPALS B&B INFINITY 9012  
 B&B ZARA 6078  
 STILL IN THE ROUGH 201  
 DIAMOND LUCY F690  
 DIAMOND LUCY 393D

BW	77
Adj. WW	726
Adj. YW	1180
SC	38
RE	13.8
Marb	3.13

CED	BW	WW	YW	SC	Milk	Marb	RE	\$M	\$W	\$B	\$C
-2	+3.1	+75	+120	+1.16	+27	+0.27	+0.70	+53	+70	+120	+209

25 &amp; 26 are twins. Good Carcass data.

**26****M&E INFINITY 4033**

BD: 3/6/23

Reg No: 20885035

KOUPALS B&B INFINITY 9012  
 B&B ZARA 6078  
 STILL IN THE ROUGH 201  
 DIAMOND LUCY F690  
 DIAMOND LUCY 393D

BW	77
Adj. WW	738
Adj. YW	1156
SC	36
RE	11.8
Marb	2.95

CED	BW	WW	YW	SC	Milk	Marb	RE	\$M	\$W	\$B	\$C
-2	+3.1	+75	+120	+0.82	+27	+0.25	+0.48	+53	+70	+108	+193

25 &amp; 26 are twins. Take home 2 brothers, cow did a great job.

**27****M&E ATLAS 1253**

BD: 3/24/23

Reg No: 20873933

M&E ATLAS 220  
 M&E BURGESS 1018  
 VISION UNANIMOUS 1418  
 M&E QUEEN MOTHER 1106  
 M&E QUEEN MOTHER 2602

BW	88
Adj. WW	664
Adj. YW	1275
SC	35
RE	12.3
Marb	2.17

CED	BW	WW	YW	SC	Milk	Marb	RE	\$M	\$W	\$B	\$C
+4	+1.1	+75	+137	+0.18	+32	+0.31	+0.42	+69	+77	+123	+229

The only 220 on the sale, AI'd to him and ended up with 10 heifers and 1 bull. The 220 daughters are good.



# SIRE DEER VALLEY GROWTH FUND



BD: 01/22/2017

Reg No: +\*18827828

BASIN PAYWEIGHT 006S  
BASIN PAYWEIGHT 1682  
21AR O LASS 7017

PLATTEMERE WEIGH UP K360  
DEER VALLEY RITA 36113  
DEER VALLEY RITA 9457

VERMILION PAYWEIGHT J847  
BASIN LUCY 3829  
HARB PENDLETON 765 J H  
21AR O LASS F24A  
SITZ UPWARD 307R  
BARBARA OF PLATTEMERE 337  
G A R NEW DESIGN 5050  
G A R EXT 614

CED	BW	WW	YW	SC	Milk	Marb	RE	\$M	\$W	\$B	\$C
+8	+1.3	+89	+166	+0.79	+30	+0.48	+0.80	+66	+91	+177	+296

**28**

## QCCR MR GROWTH FUND 026L

BD: 2/6/23

Reg No: 20872660

BASIN PAYWEIGHT 1682  
DEER VALLEY GROWTH FUND  
DEER VALLEY RITA 36113  
QCCR MR RENOWN 146  
QCCR MISS RENOWN 026H  
SCHELSKE MS RHONDA 1761 426

BW	80
Adj. WW	658
Adj. YW	1160
SC	34
RE	11.7
Marb	3.66

CED	BW	WW	YW	SC	Milk	Marb	RE	\$M	\$W	\$B	\$C
+7	+0.5	+71	+132	+0.95	+27	+0.63	+0.58	+60	+67	+155	+261



**29**

## M&E GROWTH FUND 1503

BD: 3/28/23

Reg No: 20879740

BASIN PAYWEIGHT 1682  
DEER VALLEY GROWTH FUND  
DEER VALLEY RITA 36113  
HA COWBOY UP 5405  
M&E EVERBEAM 1099  
M&E EVERBEAM 630

BW	80
Adj. WW	635
Adj. YW	1200
SC	35
RE	12.0
Marb	3.32

CED	BW	WW	YW	SC	Milk	Marb	RE	\$M	\$W	\$B	\$C
+8	+2.3	+88	+161	+0.16	+19	+0.45	+0.47	+67	+71	+153	+265

128 Marbling Ratio

**30**

## M&E GROWTH FUND 1563

BD: 3/29/23

Reg No: 20863199

BASIN PAYWEIGHT 1682  
DEER VALLEY GROWTH FUND  
DEER VALLEY RITA 36113  
M&E UNION 276  
M&E BLACKCAP 1518  
M&E BLACKCAP 2536

BW	89
Adj. WW	647
Adj. YW	1175
SC	34
RE	12.7
Marb	2.02

CED	BW	WW	YW	SC	Milk	Marb	RE	\$M	\$W	\$B	\$C
+3	+0.8	+71	+124	-0.03	+32	+0.50	+0.44	+77	+76	+148	+269

Pathfinder. Dam's NR 4@108.

40 heifer pairs with M & E Angus sired calves by side will be selling first



**31**

**M&E GROWTH FUND 1643**

BD: 4/1/23

Reg No: 20879760

BASIN PAYWEIGHT 1682  
 DEER VALLEY GROWTH FUND  
 DEER VALLEY RITA 36113  
 R B ACTIVE DUTY 010  
 M&E PRIDE 2905  
 M&E PRIDE 1432

BW	80
Adj. WW	713
Adj. YW	1247
SC	39
RE	13.9
Marb	2.07

CED	BW	WW	YW	SC	Milk	Marb	RE	\$M	\$W	\$B	\$C
+8	-0.3	+73	+135	+1.13	+31	+0.00	+0.83	+70	+73	+138	+249

Curve bender with cow power behind him. Dam's NR 7@106

**32**

**M&E GROWTH FUND 1663**

BD: 4/2/23

Reg No: 20873932

BASIN PAYWEIGHT 1682  
 DEER VALLEY GROWTH FUND  
 DEER VALLEY RITA 36113  
 M&E RESOURCE 2227  
 M&E PRIDE 1959  
 M&E PRIDE 2905

BW	84
Adj. WW	681
Adj. YW	1254
SC	38
RE	13.2
Marb	2.47

CED	BW	WW	YW	SC	Milk	Marb	RE	\$M	\$W	\$B	\$C
-3	+5.1	+97	+164	+0.96	+22	+0.10	+0.79	+60	+73	+143	+245

Same cow family as Lot 31. Look at his growth EPDs.

**34**

**M&E GROWTH FUND 1743**

BD: 4/4/23

Reg No: 20863206

BASIN PAYWEIGHT 1682  
 DEER VALLEY GROWTH FUND  
 DEER VALLEY RITA 36113  
 HA COWBOY UP 5405  
 M&E EVERBEAM 208  
 M&E EVERBEAM 2227

BW	86
Adj. WW	656
Adj. YW	1123
SC	35
RE	11.5
Marb	4.17

CED	BW	WW	YW	SC	Milk	Marb	RE	\$M	\$W	\$B	\$C
+10	+0.9	+83	+140	+0.74	+17	+0.58	+0.52	+65	+71	+151	+261

Marbling Ratio of 160! Big powerful cows behind this bull.

**33**

**M&E GROWTH FUND 1733**

BD: 4/4/23

Reg No: 20863205

BASIN PAYWEIGHT 1682  
 DEER VALLEY GROWTH FUND  
 DEER VALLEY RITA 36113  
 MOHNEN SOUTH DAKOTA 402  
 M&E LASS 3055  
 KMD LASS 714

BW	89
Adj. WW	665
Adj. YW	1158
SC	37
RE	13.5
Marb	2.34

CED	BW	WW	YW	SC	Milk	Marb	RE	\$M	\$W	\$B	\$C
+6	+2.3	+77	+137	+0.54	+28	+0.52	+0.74	+50	+69	+158	+255

Ribeye Ratio 106. Out of a stout cow.



**THANK YOU....**

- To those who helped set up the bull display
- To those attending our sale
- To our customers
- To Kimball FFA Chapter for serving the meal
- To our children, family, and friends who make this sale possible

# SIRE M&E UNION 276



BD: 02/18/2016

Reg No: 18705687

CONNEALY CONSENSUS  
CONNEALY UNION 215X  
BARBIE OF CONANGA 524

CONNEALY MENTOR 7374  
M&E BURGESS 824  
M&E BURGESS 839

KMK ALLIANCE 6595 187  
BLINDA OF CONANGA 004  
MYTTY IN FOCUS  
BARB OF CONANGA 527  
G A R RETAIL PRODUCT  
EXECUTA OF CONANGA 939  
MOORE 342-FOREFRONT 428  
M&E BURGESS 567

CED	BW	WW	YW	SC	Milk	Marb	RE	\$M	\$W	\$B	\$C
+9	-0.3	+70	+122	+0.63	+31	+0.51	+0.75	+59	+72	+153	+257

**35**

## M&E UNION 583

BD: 2/22/23

Reg No: 20863180

M&E UNION 276

CONNEALY UNION 215X

M&E BURGESS 824

DL DURAMAX 1489

M&E PRIDE 3001

M&E PRIDE 477

BW	76
Adj. WW	774
Adj. YW	1244
SC	36
RE	14.9
Marb	2.78

CED	BW	WW	YW	SC	Milk	Marb	RE	\$M	\$W	\$B	\$C
+7	+0.9	+70	+118	+0.46	+29	+0.79	+1.05	+57	+71	+168	+275

Suitable for heifers. Good carcass numbers and frame to boot.



**36**

## M&E UNION 783

BD: 2/28/23

Reg No: 20878646

M&E UNION 276

CONNEALY UNION 215X

M&E BURGESS 824

DL DUALY 1719

M&E BLACKBIRD 3261

M&E BLACKBIRD 1397

BW	74
Adj. WW	686
Adj. YW	1179
SC	35
RE	12.7
Marb	2.56

CED	BW	WW	YW	SC	Milk	Marb	RE	\$M	\$W	\$B	\$C
+6	+1.2	+67	+118	+1.21	+27	+0.44	+0.67	+58	+60	+127	+223

Suitable for heifers.





### M&E BISMARCK 883

BD: 3/6/23 Reg No: 20863183

**37**

G A R GRID MAKER

S A V BISMARCK 5682

S A V ABIGALE 0451

DL DUALY 1719

M&E PRIDE 3191

M&E PRIDE 512

BW	84
Adj. WW	647
Adj. YW	1225
SC	39
RE	11.8
Marb	2.84

CED	BW	WW	YW	SC	Milk	Marb	RE	\$M	\$W	\$B	\$C
+3	+3.4	+71	+125	+0.84	+18	+0.19	+0.71	+43	+50	+125	+205

When you see a Bismarck, know that it was bred to a good solid cow family. Hoped for a heifer, the females out of this bull should be solid.

### M&E MENTOR 773

BD: 2/28/23 Reg No: 20869794

**38**

G A R RETAIL PRODUCT

CONNEALY MENTOR 7374

EXECUTA OF CONANGA 939

M&E COWBOY 138

M&E EULIMA 1411

M&E EULIMA 1624

BW	82
Adj. WW	682
Adj. YW	1146
SC	38
RE	11.5
Marb	2.42

CED	BW	WW	YW	SC	Milk	Marb	RE	\$M	\$W	\$B	\$C
+5	+2.0	+59	+102	+1.57	+35	+0.33	+0.38	+87	+71	+100	+217

### M&E PACIFIC 923

BD: 3/9/23 Reg No: 20886997

**39**

HOOVER NO DOUBT

STERLING PACIFIC 904

BALDRIDGE ISABEL B082

SQUARE B TRUE NORTH 8052

M&E PAMELA 171

M&E PAMELA 1549

BW	76
Adj. WW	624
Adj. YW	1174
SC	38
RE	11.4
Marb	2.85

CED	BW	WW	YW	SC	Milk	Marb	RE	\$M	\$W	\$B	\$C
+10	+1.0	+74	+136	+0.38	+22	+0.86	+0.51	+85	+71	+161	+294

Suitable for heifers.

## THIS IS A LOAD OF HOME RAISED STEER AND HEIFER MIXED, THE CATTLE ENDED UP RETURNING \$15/CWT OVER THE BASE BID

Performance Category	Head	Pay Weight	% of Lot by Head	% of Lot by Weight	Total Value	Value/Cwt
Prime 2	1.00	935.0	2.2727	2.3909	\$2,837.73	\$303.50
Prime 3	8.00	7112.0	18.1818	18.1860	\$21,466.64	\$301.84
Prime 4	4.00	3733.0	9.0909	9.5456	\$11,105.69	\$297.50
Prime 5	1.00	1045.0	2.2727	2.6722	\$3,014.83	\$288.50
CA 2	2.00	1556.0	4.5455	3.9788	\$4,473.51	\$287.50
CA 3	11.00	9876.0	25.0000	25.2538	\$28,445.39	\$288.03
CA 4	10.00	8849.0	22.7273	22.6277	\$25,055.92	\$283.15
CA 5	1.00	809.0	2.2727	2.0687	\$2,204.53	\$272.50
Choice 2	1.00	787.0	2.2727	2.0124	\$2,215.41	\$281.50
Choice 3	3.00	2643.0	6.8182	6.7584	\$7,450.30	\$281.89
Choice 4	1.00	837.0	2.2727	2.1403	\$2,305.94	\$275.50
Select 2	1.00	925.0	2.2727	2.3653	\$2,344.88	\$253.50
<b>Totals</b>	<b>44.00</b>	<b>39107.0</b>	<b>99.9999</b>	<b>100.0001</b>	<b>\$112,920.77</b>	<b>\$288.75</b>

# SIRE TEHAMA TAHOE B767



BD: 09/06/2013

Reg No: #+\*17817177

SITZ UPWARD 307R  
 TEHAMA UPWARD Y238  
 TEHAMA ELITE BLACKBIRD T735

S A V FINAL ANSWER 0035  
 TEHAMA MARY BLACKBIRD Y684  
 TEHAMA MARY BLACKBIRD T073

CONNELLY ONWARD  
 SITZ HENRIETTA PRIDE 81M  
 TEHAMA GRIDMAKER L234  
 TEHAMA ELITE BLACKBIRD K592  
 SITZ TRAVELER 8180  
 S A V EMULOUS 8145  
 G A R RETAIL PRODUCT  
 TEHAMA MARY BLACKBIRD R704

CED	BW	WW	YW	SC	Milk	Marb	RE	\$M	\$W	\$B	\$C
+9	+0.2	+79	+134	+1.26	+28	+0.91	+0.74	+73	+90	+154	+273

## 40 QCCR MR TAHOE 926L

BD: 2/9/23

Reg No: 20879607

TEHAMA TAHOE B767

TEHAMA UPWARD Y238

TEHAMA MARY BLACKBIRD Y684

RCL UNANIMOUS 6810

QCCR MISS UNANIMOUS 926G

SCHELSKE MS RHONDA 1761 426

BW	85
Adj. WW	626
Adj. YW	1017
SC	34
RE	13.9
Marb	2.63

CED	BW	WW	YW	SC	Milk	Marb	RE	\$M	\$W	\$B	\$C
+3	+2.0	+65	+108	+0.63	+28	+0.49	+0.96	+75	+70	+126	+238

## 41 QCCR MR TAHOE 750L

BD: 2/9/23

Reg No: 20879745

TEHAMA TAHOE B767

TEHAMA UPWARD Y238

TEHAMA MARY BLACKBIRD Y684

BUFORD BLUESTEM 9974

QCCR MISS BLUESTEM 250D

MS FINAL PRODUCT 250 OF WAG

BW	80
Adj. WW	756
Adj. YW	1123
SC	35
RE	13.7
Marb	2.66

CED	BW	WW	YW	SC	Milk	Marb	RE	\$M	\$W	\$B	\$C
+8	+0.3	+77	+126	+1.01	+29	+0.60	+0.89	+55	+80	+141	+238

## 42 QCCR MR TAHOE 426L

BD: 2/6/23

Reg No: 20879750

TEHAMA TAHOE B767

TEHAMA UPWARD Y238

TEHAMA MARY BLACKBIRD Y684

MOGCK SURE SHOT 1761

SCHELSKE MS RHONDA 1761 426

MISS SA 338 RHONDA 532

BW	76
Adj. WW	690
Adj. YW	1182
SC	38
RE	12.3
Marb	2.47

CED	BW	WW	YW	SC	Milk	Marb	RE	\$M	\$W	\$B	\$C
+6	-1.0	+62	+96	+1.50	+26	+0.65	+0.30	+82	+70	+118	+235



- **Delivery** to begin the week following the sale
- **Sale day phones:** Marvin: 605-730-0167; Michael: 605-680-1083; Jase: 605-354-6312
- **Chisum (Auctioneer):** 605-730-4214

**43****QCCR MR ACCOMPLISHMENT 922L**

BD: 2/8/23

Reg No: 20888097

POSS ACHIEVEMENT  
SITZ ACCOMPLISHMENT 720F  
SITZ BARBARAMERE NELL 166D  
GDAR LEUPOLD 298  
MISS LEUPHOLD 922 OF WAG  
MISS MATRIX 942 OF W A G

BW	72
Adj. WW	608
Adj. YW	1017
SC	32
RE	11.6
Marb	3.95

CED	BW	WW	YW	SC	Milk	Marb	RE	\$M	\$W	\$B	\$C
+11	-0.2	+67	+115	+0.97	+21	+0.60	+0.41	+74	+57	+120	+230

**45****M&E COALITION 1223**

BD: 3/23/23

Reg No: 20897929

U-2 COALITION 206C  
GDAR COALITION 0206  
GDAR MISS WIX 7458  
KOU PAL MVP 667  
M&E EVERBEAM 1530  
M&E EVERBEAM 1242

BW	88
Adj. WW	685
Adj. YW	1243
SC	42
RE	14.2
Marb	2.08

CED	BW	WW	YW	SC	Milk	Marb	RE	\$M	\$W	\$B	\$C
+4	+2.5	+67	+115	+2.02	+35	+0.10	+0.83	+80	+67	+130	+249

The docility on these Coalitions has been real good. Females should be real good.

**47****M&E COALITION 1413**

BD: 3/28/23

Reg No: 20886757

U-2 COALITION 206C  
GDAR COALITION 0493  
GDAR BLACKCAP 4347  
KOU PALS B&B ATLAS 7131  
M&E QUINCY LASS 4040  
M&E QUINCY LASS 517

BW	88
Adj. WW	717
Adj. YW	1216
SC	39
RE	13.0
Marb	2.29

CED	BW	WW	YW	SC	Milk	Marb	RE	\$M	\$W	\$B	\$C
+3	+3.5	+63	+118	+1.56	+27	+0.18	+0.42	+80	+53	+105	+216

Dam's NR 2@109

**44****QCCR MR ACCOMPLISHMENT 638L**

BD: 2/14/23

Reg No: 20888095

POSS ACHIEVEMENT  
SITZ ACCOMPLISHMENT 720F  
SITZ BARBARAMERE NELL 166D  
S A V BRILLIANCE 8077  
MISS BRILLIANCE 638 OF W A G  
MISS SOO LINE 218 OF WAG

BW	86
Adj. WW	530
Adj. YW	1013
SC	32
RE	11.2
Marb	1.80

CED	BW	WW	YW	SC	Milk	Marb	RE	\$M	\$W	\$B	\$C
+4	+2.4	+59	+110	+0.86	+23	+0.25	+0.55	+72	+45	+111	+216

**46****M&E COALITION 1313**

BD: 3/26/23

Reg No: 20897928

U-2 COALITION 206C  
GDAR COALITION 0493  
GDAR BLACKCAP 4347  
M&E UNION 276  
M&E QUEEN MOTHER 760  
M&E QUEEN MOTHER 1748

BW	66
Adj. WW	645
Adj. YW	1101
SC	34
RE	11.7
Marb	3.14

CED	BW	WW	YW	SC	Milk	Marb	RE	\$M	\$W	\$B	\$C
+20	-3.6	+49	+94	+0.37	+35	+1.05	+0.30	+66	+59	+139	+246

Sleep all night calving ease. Excellent Marbling, female maker.

**48****M&E COALITION 1653**

BD: 4/1/23

Reg No: 20885759

U-2 COALITION 206C  
GDAR COALITION 0493  
GDAR BLACKCAP 4347  
SYDGEN ENHANCE  
M&E PRIDE 150  
M&E PRIDE 368

BW	74
Adj. WW	722
Adj. YW	1242
SC	42
RE	11.5
Marb	2.71

CED	BW	WW	YW	SC	Milk	Marb	RE	\$M	\$W	\$B	\$C
+13	-0.7	+81	+146	+2.96	+32	+0.57	+0.33	+71	+78	+143	+256

Suitable for heifers.



**49**

BD: 4/6/23

Reg No: 20885762

**M&E JUSTIFIED 5N**

M&amp;E JUSTIFIED 189

KG JUSTIFIED 3023

M&amp;E EVERBEAM 117

S FOUNDATION 514

M&amp;E EVERBEAM 5548

M&amp;E EVERBEAM 2227

BW	90
Adj. WW	681
Adj. YW	1233
SC	37
RE	13.0
Marb	3.25

CED	BW	WW	YW	SC	Milk	Marb	RE	\$M	\$W	\$B	\$C
+0	+2.3	+69	+117	-	+21	+0.75	+0.52	+69	+54	+137	+247

Deep bodied, solid carcass data.

**50**

BD: 4/7/23

Reg No: 20885760

**M&E JUSTIFIED 4050**

M&amp;E JUSTIFIED 189

KG JUSTIFIED 3023

M&amp;E EVERBEAM 117

KROUPALS B&amp;B ATLAS 7131

M&amp;E EVERBEAM 4050

M&amp;E EVERBEAM 117

BW	84
Adj. WW	717
Adj. YW	1227
SC	42
RE	12.6
Marb	2.37

CED	BW	WW	YW	SC	Milk	Marb	RE	\$M	\$W	\$B	\$C
+1	+1.6	+78	+134	+1.93	+24	+0.46	+0.58	+63	+67	+130	+232

Dam's NR 2@102. Solid cow family.

**52**

BD: 3/25/23

Reg No: 20885761

**M&E STUNNER 1283**

A A R STUNNERJ227

MUSGRAVE 316 STUNNER

A A R BLACKBIRD 9044

S A V BISMARCK 5682

M&amp;E BURGESS 270

M&amp;E BURGESS 1118

BW	80
Adj. WW	685
Adj. YW	1077
SC	36
RE	-
Marb	2.05

CED	BW	WW	YW	SC	Milk	Marb	RE	\$M	\$W	\$B	\$C
+9	+1.0	+72	+119	+0.84	+29	-0.10	+0.81	+77	+75	+101	+208

Suitable for heifers. Easy fleshing good cow family.

**54**

BD: 2/27/23

Reg No: 20866697

**M&E SPOTLITE 703**

MAF SPOTLITE 2053

MAF SPOTLITE 2835

B M MISS JETSTREAM 232

CONNEALY DRIVER 390

TBA BLACKBIRD 1318

MBA BLACKBIRD 394

BW	71
Adj. WW	692
Adj. YW	1137
SC	36
RE	13.0
Marb	2.64

CED	BW	WW	YW	SC	Milk	Marb	RE	\$M	\$W	\$B	\$C
+10	+1.2	+59	+106	+1.07	+25	+0.44	+0.45	+56	+54	+126	+219

Suitable for heifers.

**51**

BD: 3/22/23

Reg No: 20904746

**M&E STUNNER 1183**

A A R STUNNERJ227

MUSGRAVE 316 STUNNER

A A R BLACKBIRD 9044

M&amp;E UNION 276

M&amp;E RAINMAKER 6009

M&amp;E RAINMAKER 1533

BW	73
Adj. WW	669
Adj. YW	1090
SC	37
RE	12.4
Marb	2.63

CED	BW	WW	YW	SC	Milk	Marb	RE	\$M	\$W	\$B	\$C
+11	-0.5	+67	+113	+1.20	+30	+0.40	+0.60	+79	+69	+123	+239

Suitable for heifers.

**53**

BD: 3/23/23

Reg No: 20863186

**M&E STELLAR 983**

KROUPALS B&amp;B STELLAR 1120

SITZ STELLAR 726D

B&amp;B BLACKCAP 5025

CONNEALY STUD 3239

TBA QUEEN 1855

MBA QUEEN 8504

BW	77
Adj. WW	672
Adj. YW	1181
SC	35
RE	13.4
Marb	2.37

CED	BW	WW	YW	SC	Milk	Marb	RE	\$M	\$W	\$B	\$C
+4	+1.5	+67	+124	+0.27	+25	+0.74	+0.64	+63	+57	+161	+272

Suitable for heifers.

**55**

BD: 3/14/23

Reg No: 20873931

**M&E SPOTLITE 943**

MAF SPOTLITE 2053

MAF SPOTLITE 2835

B M MISS JETSTREAM 232

HILLTOPS WIDE LOAD 58C

M&amp;E EVERBEAM 1161

M&amp;E EVERBEAM 523

BW	76
Adj. WW	669
Adj. YW	1159
SC	38
RE	12.1
Marb	2.43

CED	BW	WW	YW	SC	Milk	Marb	RE	\$M	\$W	\$B	\$C
+6	+2.3	+59	+111	+1.87	+23	+0.33	+0.30	+57	+48	+116	+207

Suitable for heifers.

# FALL BULLS

**60**

## M&E JUSTIFIED 32

BD: 8/30/22 Purebred

M&E JUSTIFIED 189

KG JUSTIFIED 3023  
REG: 19690658  
M&E EVERBEAM 117

SC 43

PUREBRED ANGUS 4146

BW	Act. WW	Act. YW 3/4/24	REA	Marb	Rib Fat	Rump Fat
80	706	1348	14.3	2.83	0.29	0.38

**62**

## M&E RESOURCE 62

BD: 9/5/22 Purebred

M&E RESOURCE 1117

S A V RESOURCE 1441  
REG: 19037664  
M&E BLACK JESTRESS 2023

SC 40

M&E CHLOE 105

BASIN PAYWEIGHT 1682  
REG: 18387443  
M&E CHLOE 473

BW	Act. WW	Act. YW 3/4/24	REA	Marb	Rib Fat	Rump Fat
86	780	1462	15.5	2.11	0.20	0.21

**64**

## M&E BLACKOUT 142

BD: 9/10/22 Purebred

KOUPALS B&B BLACKOUT 9058

JINDRA BLACKOUT  
REG: 19560975  
B&B LASSIE 3049

SC 39

M&E QUINCY LASS 508

S WHITLOCK 179  
REG: 19939183  
M&E QUINCY LASS 1366

BW	Act. WW	Act. YW 3/4/24	REA	Marb	Rib Fat	Rump Fat
80	700	1478	13.6	1.92	0.25	0.23

**66**

## M&E RESOURCE 172

BD: 9/13/22 Purebred

M&E RESOURCE 1117

S A V RESOURCE 1441  
REG: 19037664  
M&E BLACK JESTRESS 2023

SC 42

DIAMOND LADY JAYE 542F

S M R TRACTION 5034  
REG: 19504962  
DIAMOND LADY JAYE 990C

BW	Act. WW	Act. YW 3/4/24	REA	Marb	Rib Fat	Rump Fat
90	690	1462	13.4	2.36	0.23	0.25

**61**

## M&E BLACKOUT 52

BD: 9/5/22 Purebred

KOUPALS B&B BLACKOUT 9058

JINDRA BLACKOUT  
REG: 19560975  
B&B LASSIE 3049

SC 39

M&E BURGESS 689

BW	Act. WW	Act. YW 3/4/24	REA	Marb	Rib Fat	Rump Fat
76	700	1470	13.1	3.60	0.34	0.25

**63**

## M&E DRIVER 72

BD: 9/6/22 Purebred

TBA DRIVER 0528

ABA DRIVER 8668  
REG: 19797699  
MBA ZARA MISS 5063

SC 39

M&E ELMARETTA 1597

VISION UNANIMOUS 1418  
REG: 19684105  
DIAMOND ELMARETTA 3594

BW	Act. WW	Act. YW 3/4/24	REA	Marb	Rib Fat	Rump Fat
85	630	1380	14.0	3.57	0.21	0.13

**65**

## M&E DRIVER 152

BD: 9/11/22 Purebred

TBA DRIVER 0528

ABA DRIVER 8668  
REG: 19797699  
MBA ZARA MISS 5063

SC 39

M&E QUINCY LASS 346

SOO LINE MOTIVE 9016  
REG: 19322528  
M&E QUINCY LASS 1694

BW	Act. WW	Act. YW 3/4/24	REA	Marb	Rib Fat	Rump Fat
70	760	1440	13.2	2.22	0.17	0.19

Fall Bulls sell as commercial bulls.





Marvin & Eileen  
Kroupa Family  
36023 251st Street  
Kimball, SD 57355

FIRST CLASS MAIL  
U.S. POSTAGE  
**PAID**  
PHILIP, SD  
PERMIT NO. 25



*Please bring this catalog on sale day.*

Address Service Requested



**2024**  
*28th Annual Production Sale*

**APRIL 11**

*100 p.m. at the ranch  
one mile west of Kimball, SD*

[www.MandEangus.com](http://www.MandEangus.com)